



Crabtree, Rohrbaugh & Associates

# HEMPFIELD SCHOOL DISTRICT

FACILITY STUDY UPDATE

May 14, 2019

**GOALS OF THE STUDY**

**STUDY COMPONENTS**

**SITE ANALYSIS**

**SAFETY & SECURITY**

**BUILDING ENVELOPE**

**INTERIOR LEARNING ENVIRONMENTS**

**CODE & REGULATORY REQUIREMENTS**

**BUILDING SYSTEMS**

**EDUCATIONAL PROGRAM**

**AGENDA**



## GOALS OF THE STUDY



**Short and long term planning**

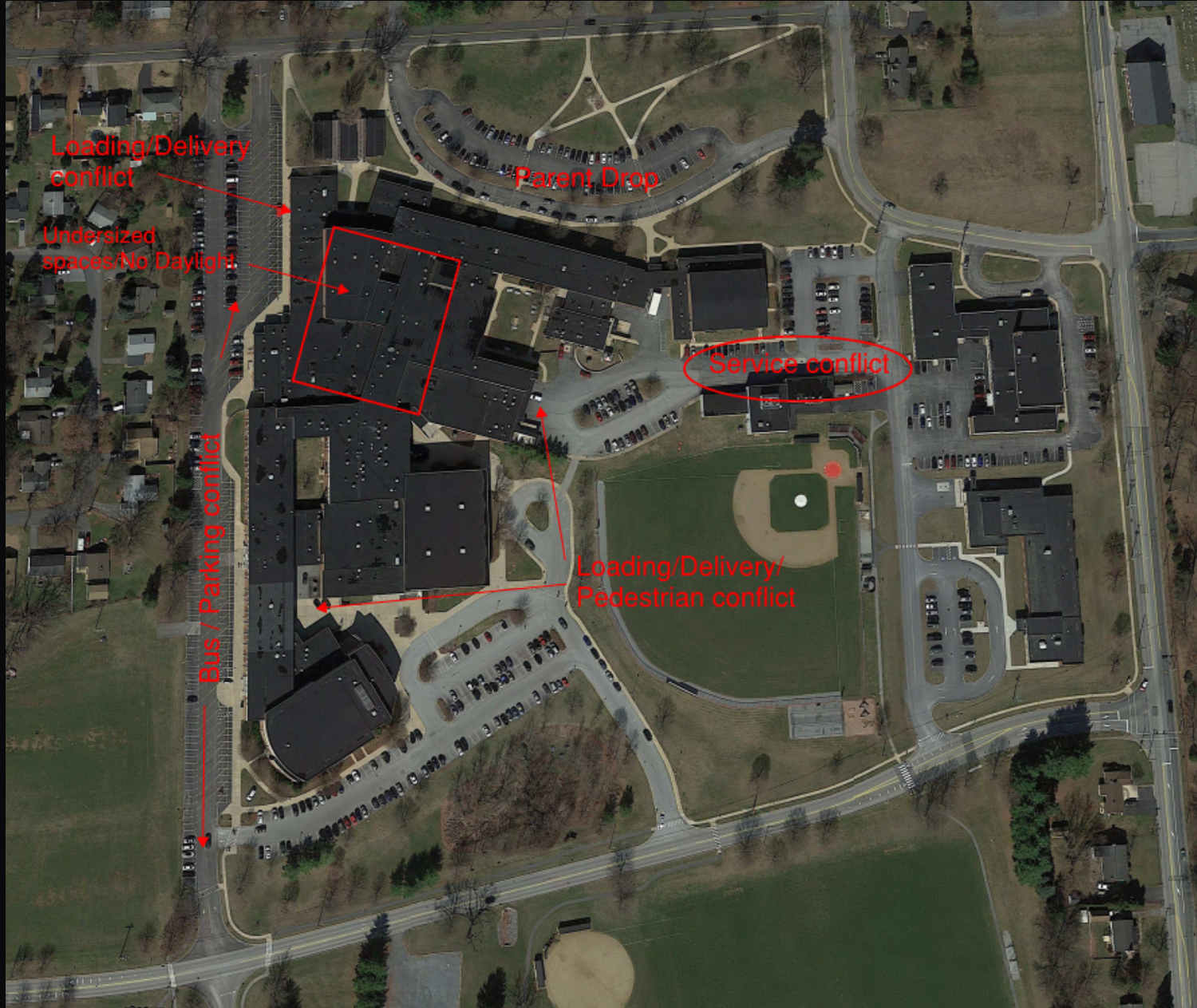
**Implement future-focused educational vision**

**Plan for enrollment growth**

**Capital improvement plan to maintain facilities / assets**

**Guide for decision making**

## SITE ANALYSIS



**Bus and vehicular traffic patterns**

**Delivery and service conflicts**

**Adequate parking for staff,  
students, public and events**

**Accessibility to facilities and  
athletics**

**Storm water**

**Exterior lighting**



# SAFETY AND SECURITY



**Drop off zones and visibility**

**Building Organization**

**Drop off zones and  
academic wings**

**Entry sequence – secure vestibule**

**Building systems; cameras**

**District policy & procedures**



# BUILDING ENVELOPE

## Exterior materials condition

- Masonry
- EIFS Drivit
- Metal Panel

## Windows, doors, overhead

## Roofing condition & insulation

## Canopies / soffits





# INTERIOR LEARNING ENVIRONMENTS



**Interior Finishes**

**Flooring, Ceilings, Walls  
Instructional Surfaces**

**Adequate Support/ Storage  
Space**

**Equipment**

**Casework**

**Lighting**



# INTERIOR LEARNING ENVIRONMENTS



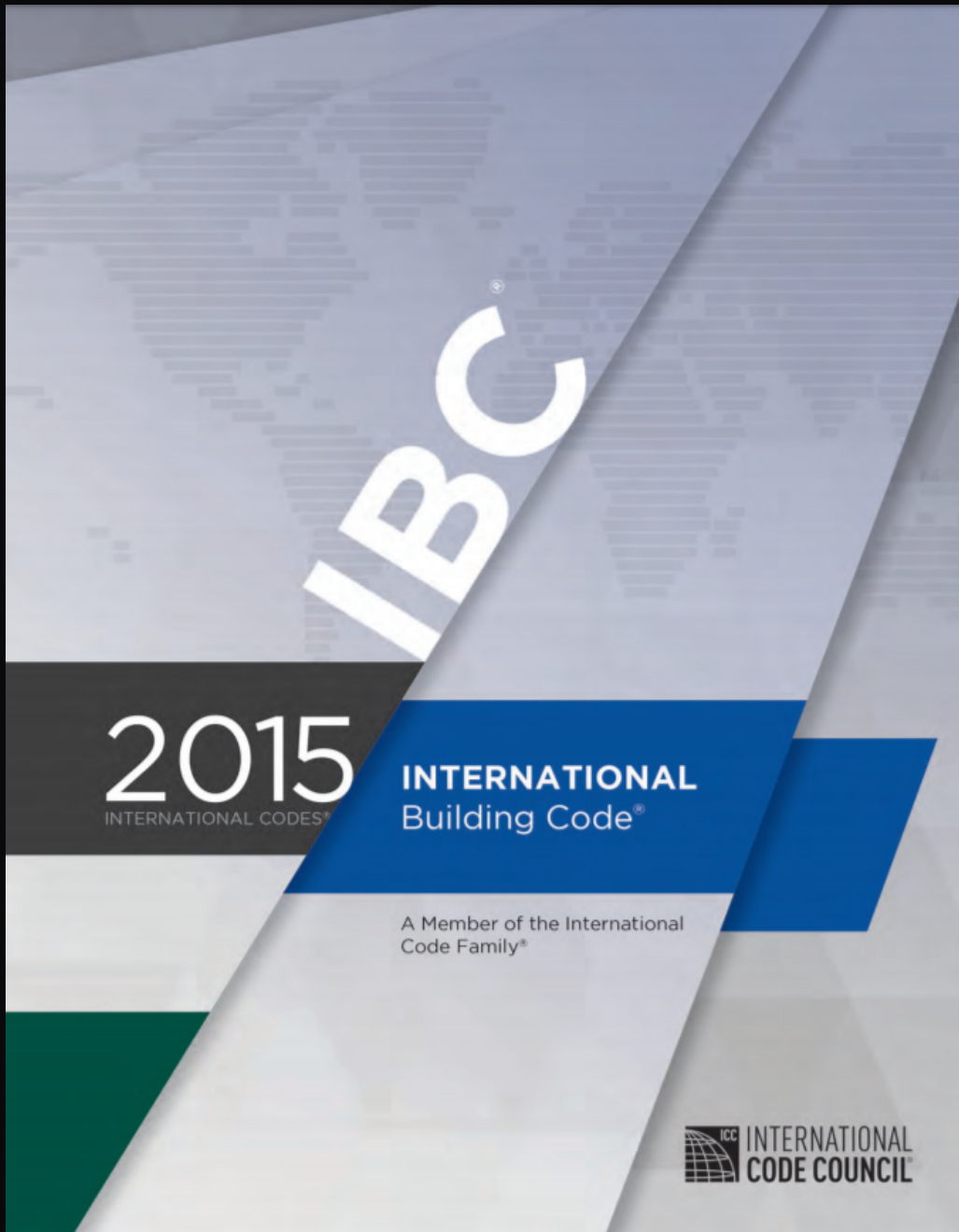


# INTERIOR LEARNING ENVIRONMENTS



High School Sample of Classroom UV.jpg

# CODE & REGULATORY REQUIREMENTS



## Public Facility; Educational Use

### PA State Requirements

IBC 2015, Except Chapters 1, 11, & 30

IBC 2018, Chapter 11 & Appendix E

International Fire Code - 2015

International Mechanical Code - 2015

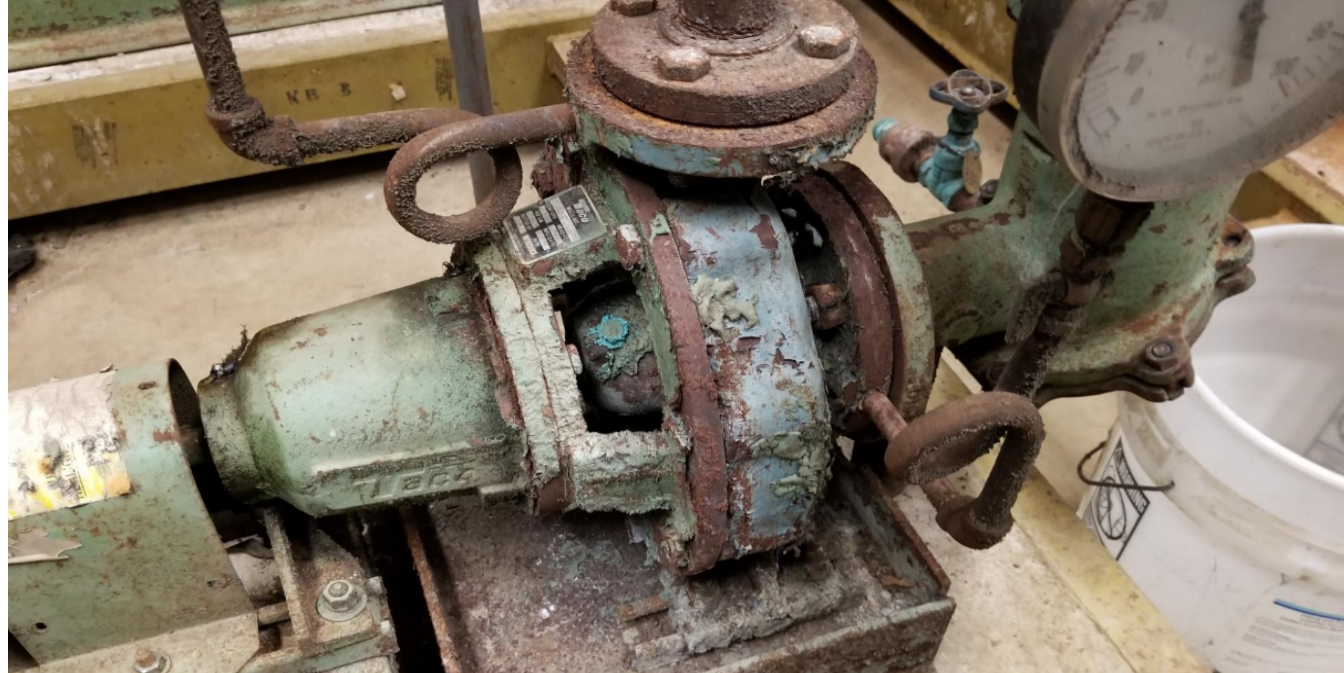
International Plumbing Code - 2015

International Energy Conservation Code - 2015

National Electric Code - 2014

ICC ANSI (accessibility) 2009





# BUILDING SYSTEMS

Mechanical systems for heating and cooling

Plumbing systems

Electrical systems

Technology systems

Equipment Condition

Life Cycle Costs





## EDUCATIONAL PROGRAM

Understanding of current programs  
vs future vision

Utilization rates

Determining adequate space  
requirements

Undersized spaces

Spaces w/o daylighting

Location & adjacency

Building Organization

Support/Storage

Future- focused environments

Program equity – Student spaces

Collaboration spaces





## EDUCATIONAL PROGRAM

Understanding of current programs  
vs future vision

Utilization rates

Determining adequate space  
requirements

Undersized spaces  
Spaces w/o daylighting  
Location & adjacency  
Building Organization  
Support/Storage

Future- focused environments

Program equity

Collaboration spaces





## EDUCATIONAL PROGRAM

Understanding of current programs  
vs future vision

Utilization rates

Determining adequate space  
requirements

Undersized spaces

Spaces w/o daylighting

Location & adjacency

Building Organization

Support/Storage

Future- focused environments

Program equity

Collaboration spaces



# Questions?



Crabtree, Rohrbaugh & Associates  
[www.cra-architects.com](http://www.cra-architects.com)